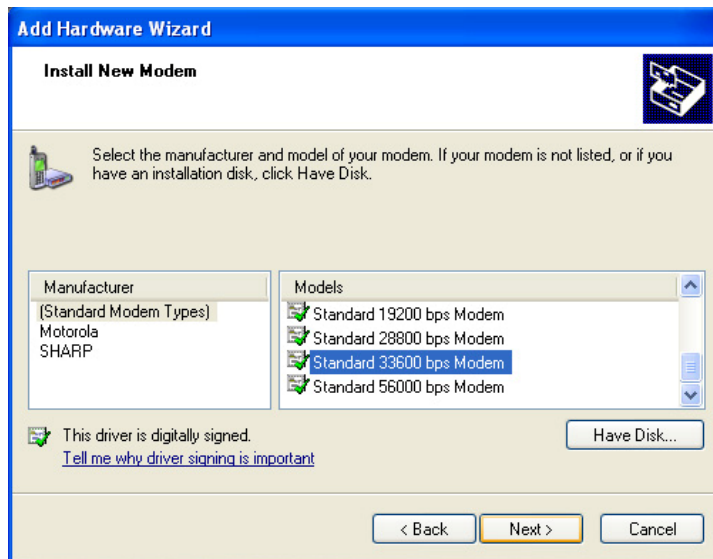


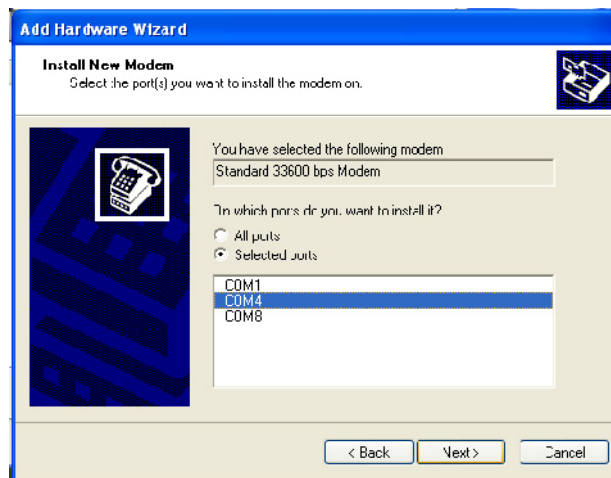
3. Click [Modem] Tag then click “Add ” to add a new modem device.



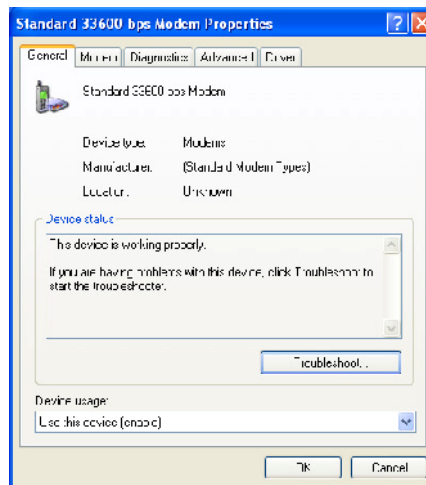
4. Enable the checkbox let windows do not auto detect your modem device, then click “ Next ”.



5. Set the Manufacturer in “Standard Modem Types”, and model name is “Standard 33600bps Modem”, then click “Next”.
- When screen appear “Digital Signature Not Found”, then select “Yes” button to continue the installation. (For Windows 2000 only)
6. Setting communication port in **Com 3** for GPRS/GSM use, then click “Next”.

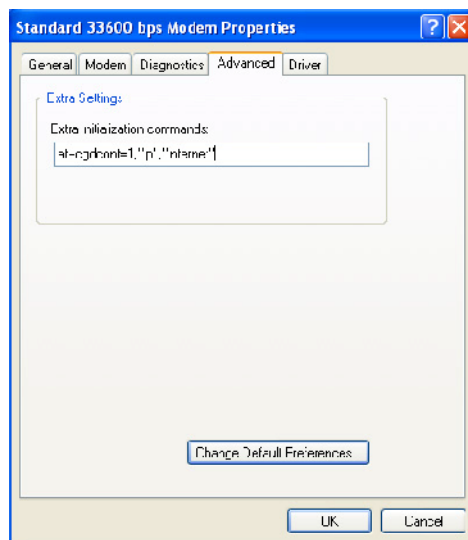


7. After step 5, it will back to “Phone and Modem options” setting page, Please select “Standard Modem....” and click “Properties” for further configuration.



- In “ Standard 33600 bps Modem properties ” setting page, please see “ Advanced ” page, to check if Extra Settings are correctly, ex:
AT+CGDCONT=1,"IP","EMOME"

Annotation: EMOME is you GPRS service provider. If there has any confused, please contact with your GPRS service provider.



1.3 GSM Modem

NOTE: To take advantage of the wireless modem feature, the PCI-952 driver supplied with your computer must be installed (see the chapter 6 of the Operator’s manual).

Your computer can send and receive data via a mobile network using the GSM protocol.

To send or receive data over a GSM network, you must have an account with a service provider that supports GSM data services, and the service provider must enable the data features on your account.

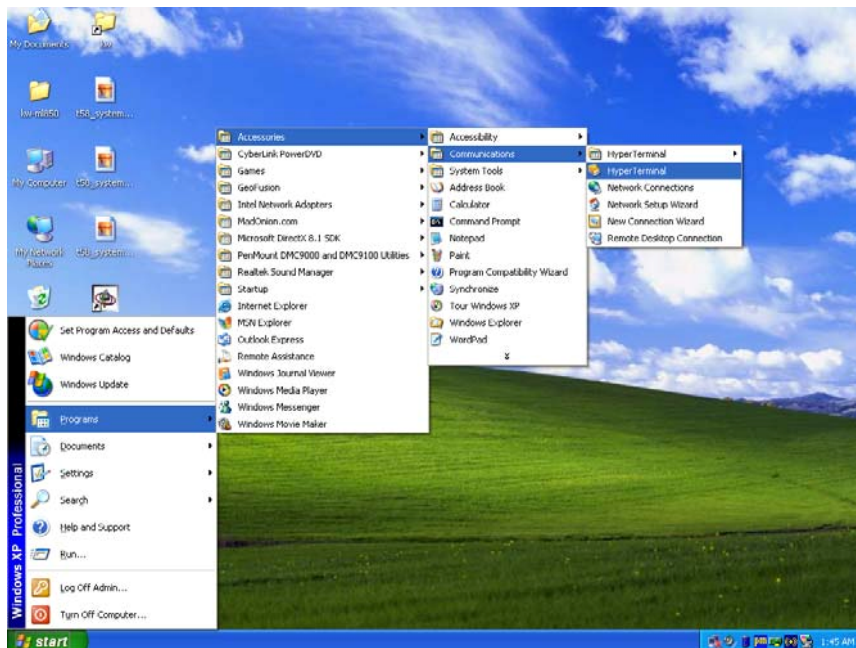
1.3.1 Connecting GSM Modem

Before you can use the GSM modem connection, make sure that you have a subscription to the Circuit-Switched Data (CSD) network with your service provider and you have an account with your service provider or corporate network you are connecting to.

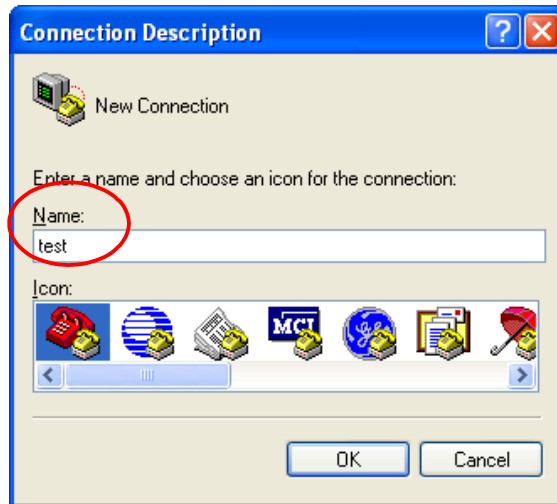
To connect to an ISP or dial in to a specific computer, you must configure a connection for that service on your computer.

1.3.2 Setting GSM Modem

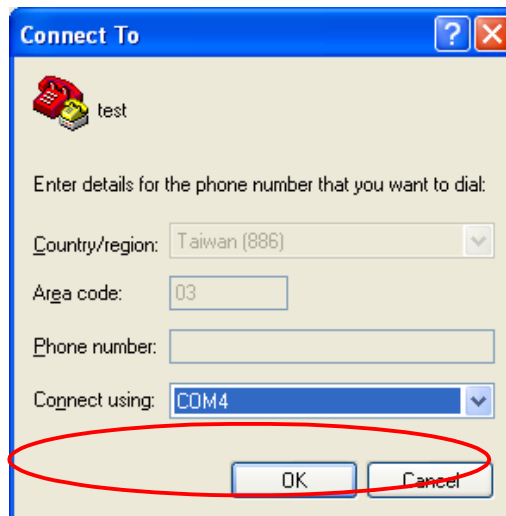
1. Select path:Start\Accessories\Communications\HyperTerminal



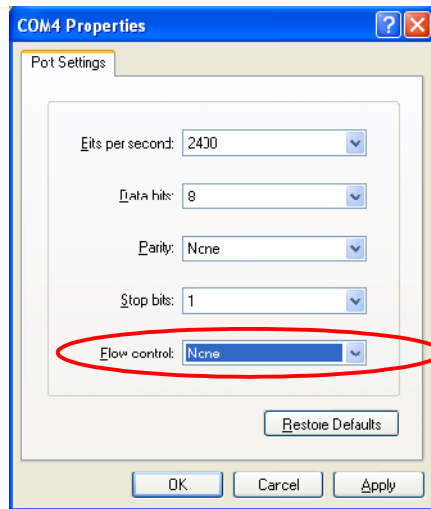
- When Connection Description screen appear, then you key-in “your Name”.



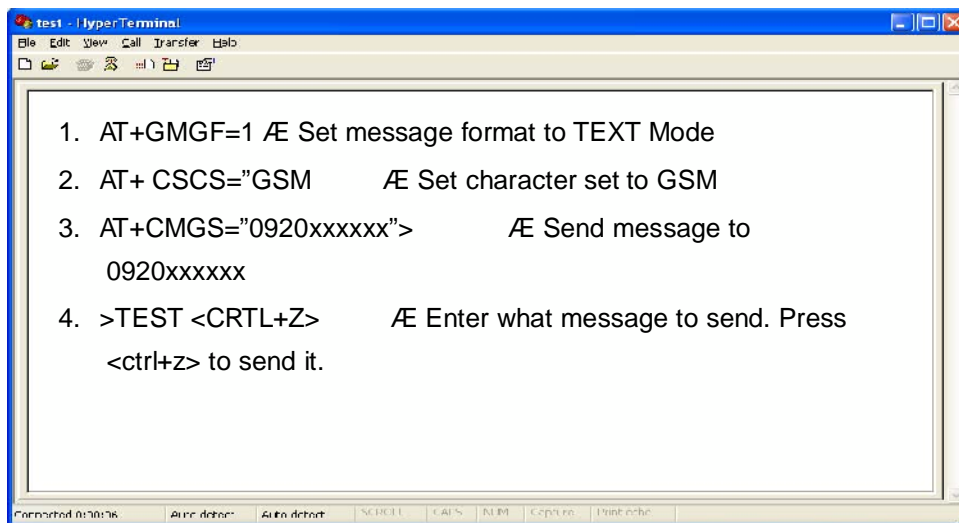
- Select Connect port is “COM 3”.



4. When **COM3** properties screen appear, then you select “None” and click “OK” button.



5. When Hyper Terminal screen appear, then you key-in your command. For example:



1.4 GPRS Modem

Your computer can receive General Packet Radio Services (GPRS), a high-speed data-only service that transmits data over a mobile telephone network. In addition, GPRS provides permanent on-line connection.

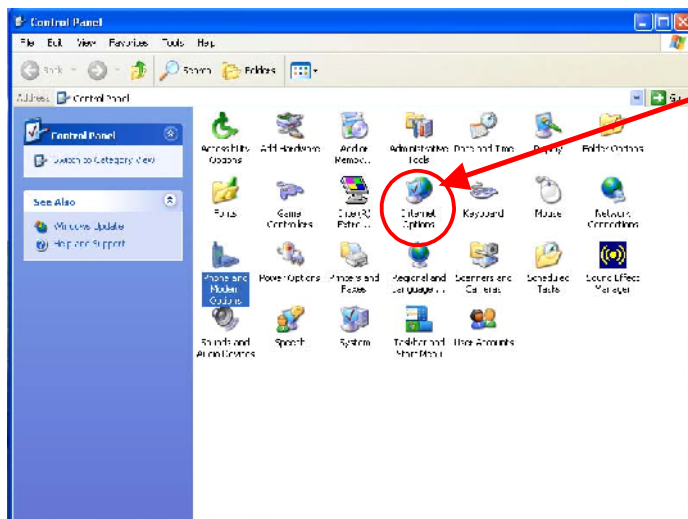
To use GPRS, you must have a subscription to the function with a service provider that supports GPRS.

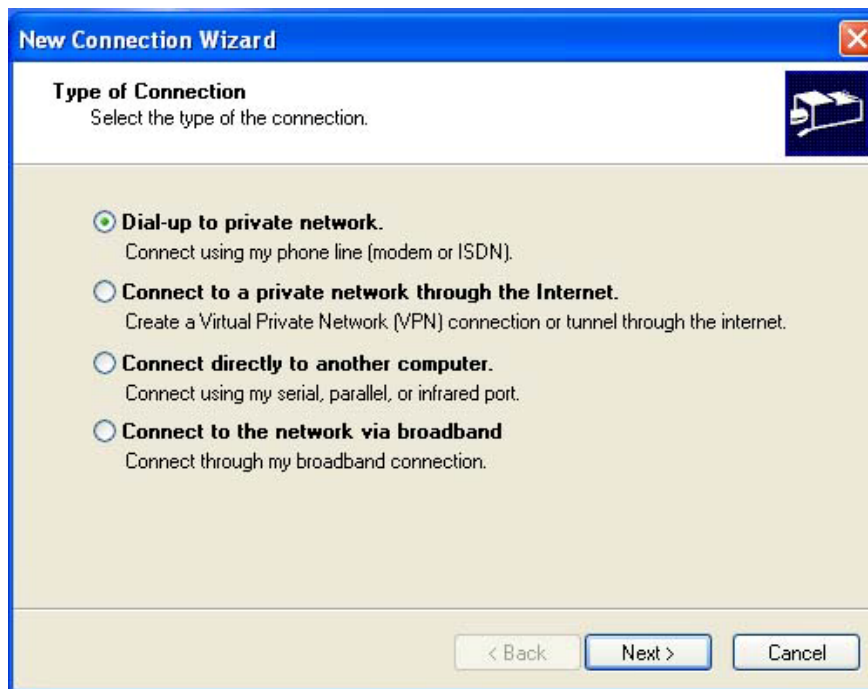
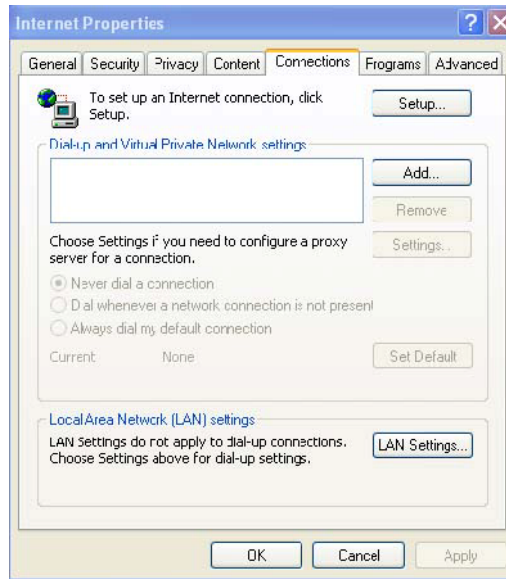
1.4.1 Connecting GPRS Modem

To connect to a GPRS network, you must configure a connection for that service on your computer.

1.4.2 Setting Internet connection options for Windows 2000/Windows XP.

2. To configure “ Internet options ” for Internet connection via GPRS.
Open “Internet Properties” from “ Control Panel ”.
Open “ Connection ” page then click “ Add ” to add a new connection. Click “ Next ” to next step.





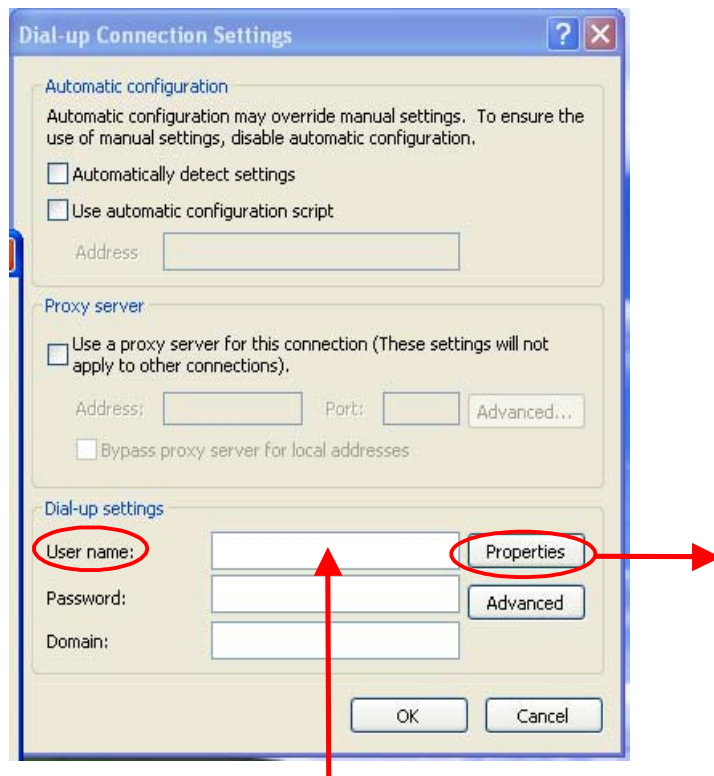
3. In Phone number setting, type example: ***99# (Detail information please contact** , then click “ Next ” to next step.



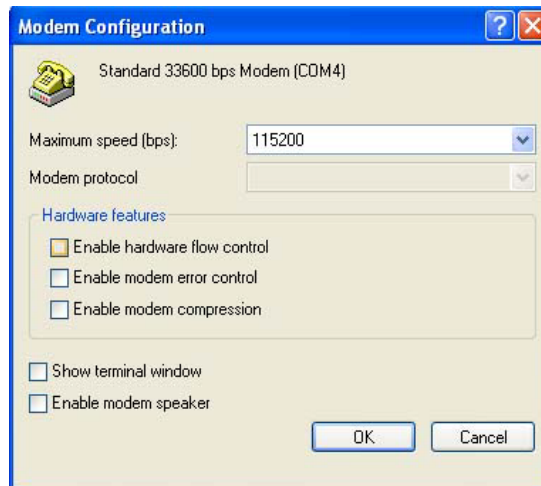
4. Type a name you want for this connection, after that, click “ Finish ” to save it in the Network Connection folder.



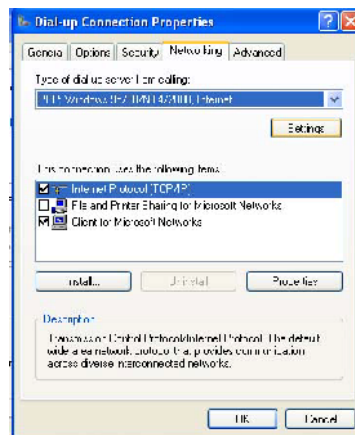
5. After step4, it will pop-up “ Dial-up Connection Settings “ automatically.
 - I. Please free to key in any words in “User Name” and p“ Password ”
 - II. Click “ Properties” to configure “Dial-up Connection Properties “

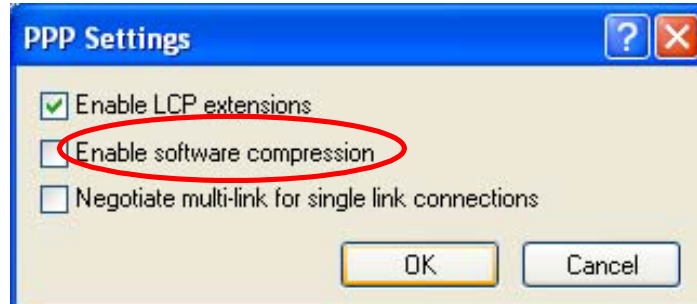


- III. In “Dial-up Connection Properties” page, click “Configure”, (For Windows 2000, then Windows XP select “Settings”) make sure all of Hardware features were disabled.



6. In “Dial-up Connection Properties”, please select “Networking” option setting, then make sure your Dial-up server type is 【PPP: Win95/98/NT....】 Click the “Setting” button to enter detail configuration setting. Make sure the “Software compression” feature has been disabled.





7. In "Dial-up Connection Properties page, select "Internet Protocol [TCP/IP] ", then click "Properties" , "Advanced" button. To disabled PPP Link feature in **General** setting.

